

SERVICES FROM THE HAMILTON FAMILY HEALTH TEAM



Pharmacist



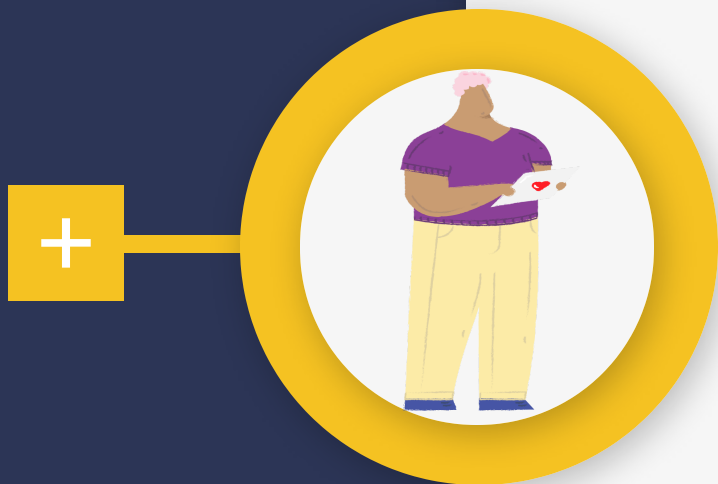
Dietician



Physiotherapy



**Mental Health
counselling**



Psychiatry



PHYSIOTHERAPY

Limited therapy for those without private insurance and not covered by OHIP - not WSIB approved



PSYCHIATRY

To help with diagnosis, medication and therapy options- working with your family doctor



Mental Health Counselling

Counselling for those without private coverage

Anxiety/depression

including
PTSD

ADHD

Youth and
adults

Relationships

Home, work,
bereavement



PHARMACIST

Help to reduce medications, explain medications and side effects, diabetes review and help to stop smoking



DIETICIAN

For advice at all ages- starting first foods, nutrition concerns, weight advice, diet related to diabetes, heart disease and general health



INFOGRAPHIC CIRCLES

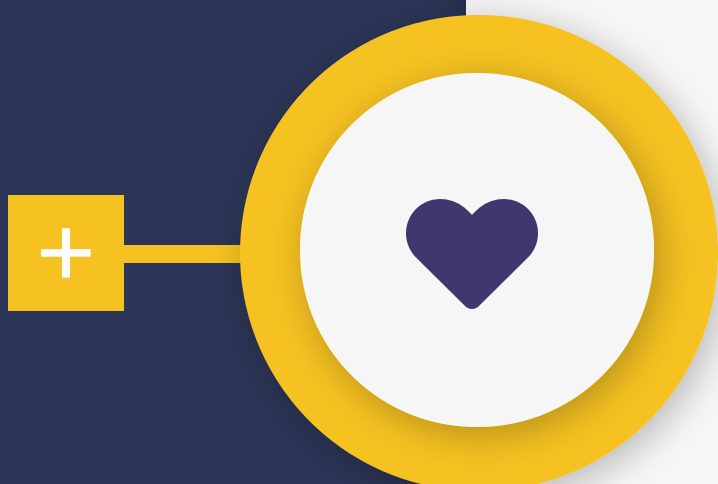
Contextualize your topic

LOGO.



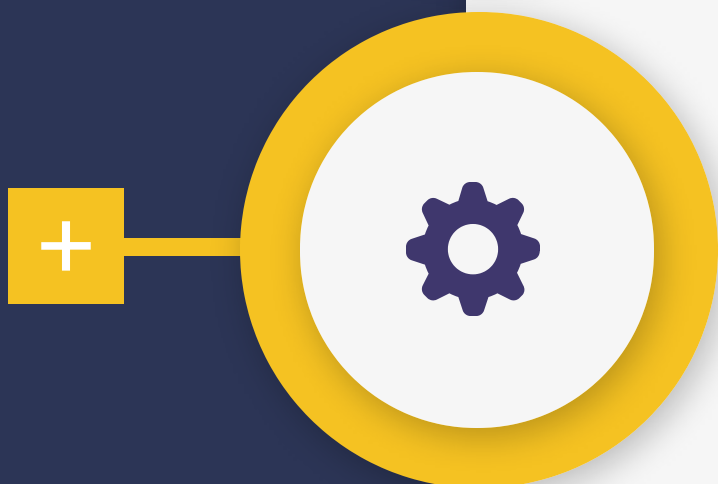
A great title

Contextualize your topic



A great title

Contextualize your topic



A great title

Contextualize your topic



A great title

Contextualize your topic



A great title

Contextualize your topic



Here you can put a highlighted title

Pose a dramatic question; it is the essential ingredient for keeping the audience's attention. It is usually posed subtly at the beginning of the story to intrigue the audience and is resolved at the end.



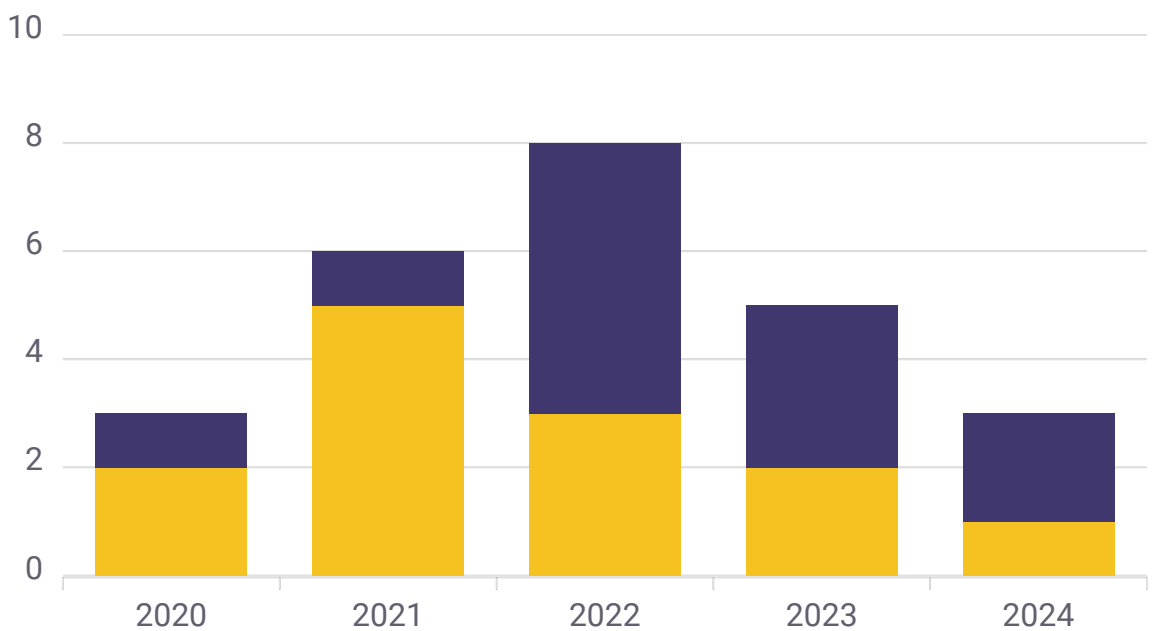
Here you can put a highlighted title

Pose a dramatic question; it is the essential ingredient for keeping the audience's attention. It is usually posed implicitly at the beginning of the story to intrigue the audience and is resolved at the end.



Here you can put a highlighted title

Pose a dramatic question; it is the essential ingredient to keep the audience's attention. It is usually posed subtly at the beginning of the story to intrigue the audience and is resolved at the end.





Here you can put a highlighted title

Pose a dramatic question; it is the essential ingredient for maintaining the audience's attention. It is usually posed subtly at the beginning of the story to intrigue the audience and is resolved at the end.



Here you can put a highlighted title

Pose a dramatic question; it is the essential ingredient for keeping the audience's attention. It is usually posed subtly at the beginning of the story to intrigue the audience and is resolved at the end.

